

Microsoft Surface Pro Recommended Screen Display Settings

Warning Note: Before changing any setting, write down the current setting first, in-case you decide to change it back.

#1 All Surfaces: **disable** screen side camera using Device Manager.

#2 Surface Pro 3:

A: Right click on the Windows Desktop and select “**Screen Resolution**”

- 1) Set the screen resolution to: **1280 x 800**
- 2) Set the screen orientation to **Landscape**
- 3) **Un-Check** the “**Allow the screen to auto-rotate**”.

B: Right click on the Windows Desktop and select “**Personalization**”

- 1) Make sure the “**Change the size of all items**” is slid to the **far left “Smaller”** this typically represents 100% not 125% or 150%.
-

#3 Surface Pro 2:

A: Right click on the Windows Desktop and select “**Screen Resolution**”

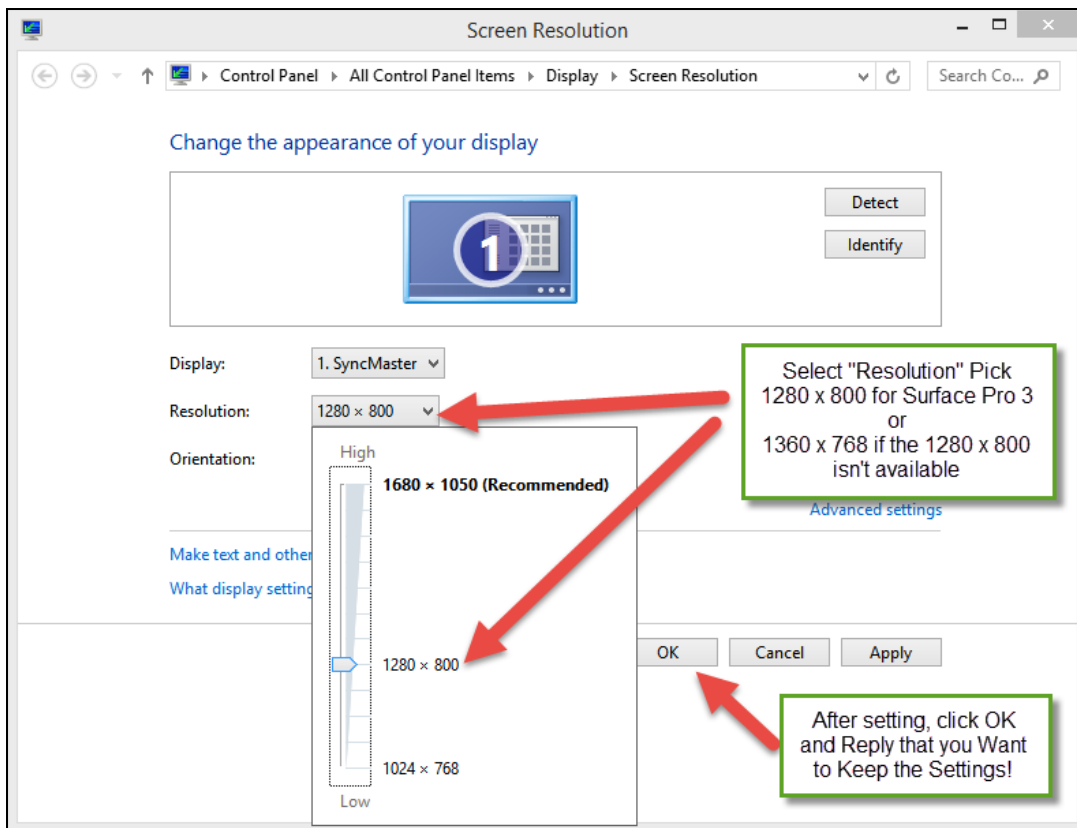
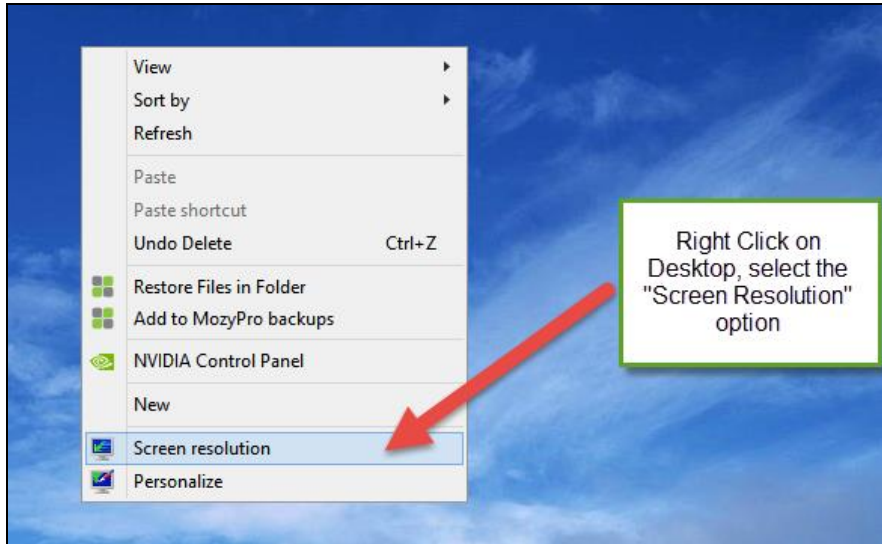
- 1) Set the screen resolution to: **1360 x 768**
- 2) Set the screen orientation to **Landscape**
- 3) **Un-Check** the “**Allow the screen to auto-rotate**”.

B: Right click on the Windows Desktop and select “**Personalization**”

- 1)) Make sure the “**Change the size of all items**” is slid to the **far left “Smaller”** this typically represents 100% not 125% or 150%.
 - 2) Under the “**Change only the text size**”, select “**Title bars**” and set them to **14**, **13**, or **12**. We recommend **14**.
-

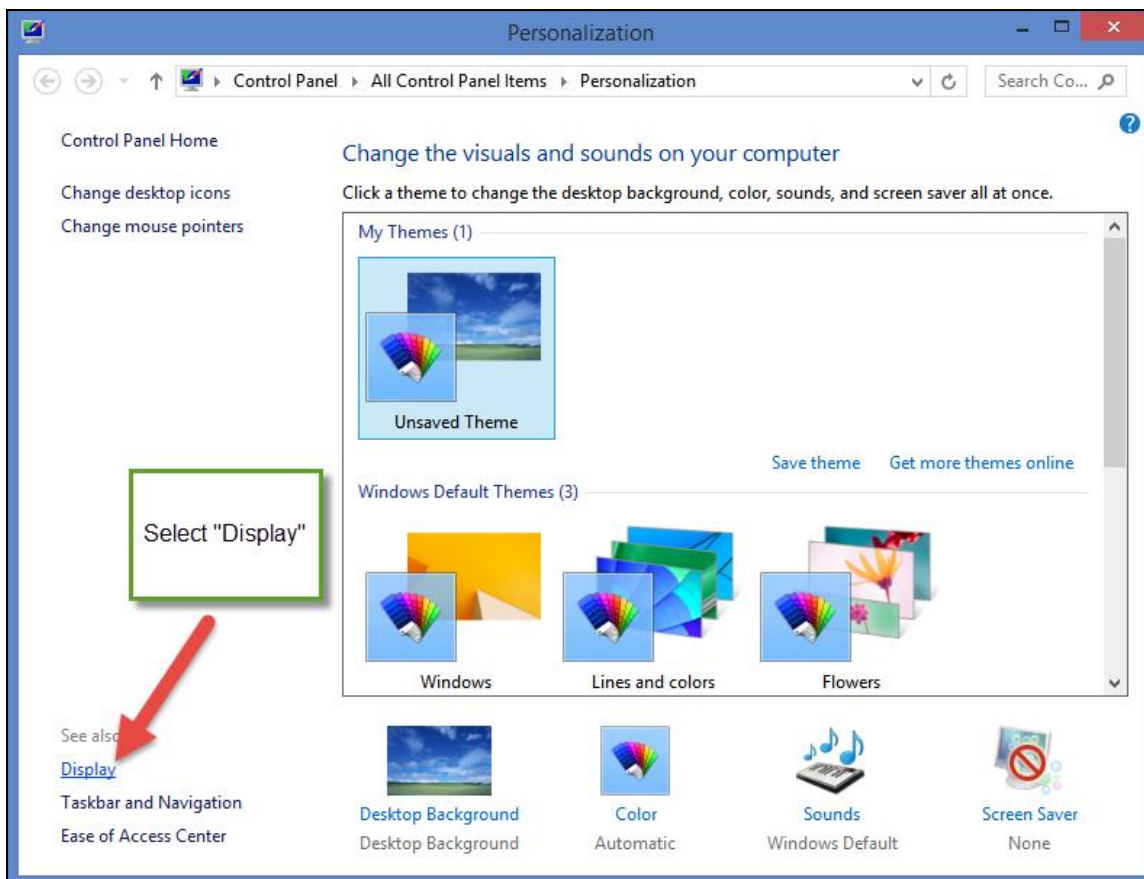
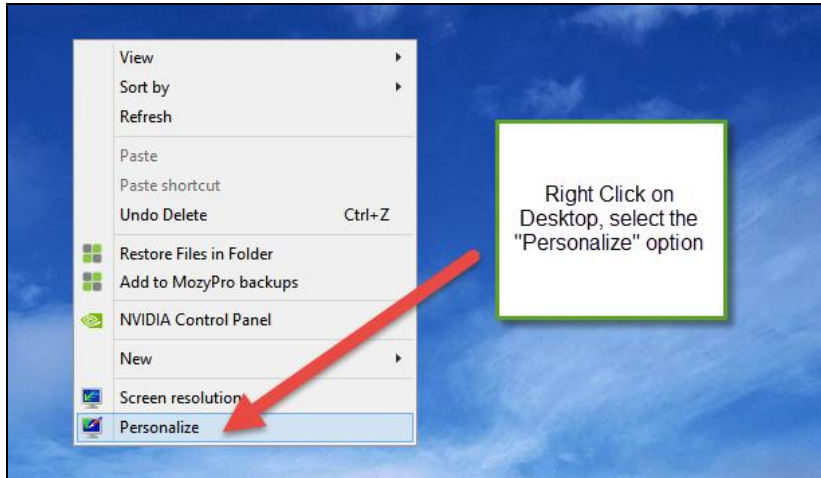
Microsoft Surface Pro Recommended Screen Display Settings

Screen Shots



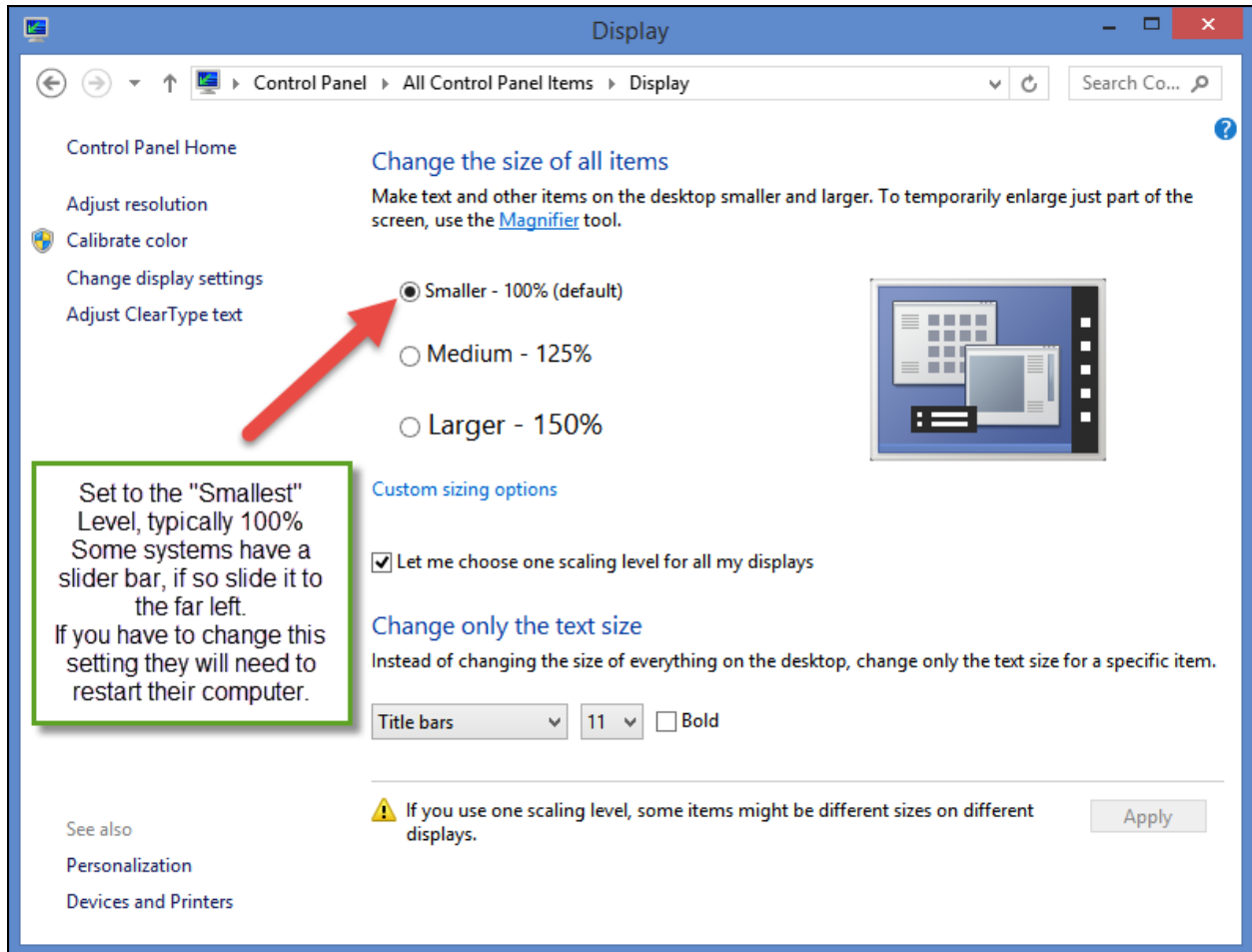
Microsoft Surface Pro Recommended Screen Display Settings

Screen Shots



Microsoft Surface Pro Recommended Screen Display Settings

Screen Shots



The screenshot shows the Windows 'Display' settings window. The title bar reads 'Display'. The breadcrumb path is 'Control Panel > All Control Panel Items > Display'. The left sidebar contains links: 'Control Panel Home', 'Adjust resolution', 'Calibrate color', 'Change display settings', and 'Adjust ClearType text'. The main content area is titled 'Change the size of all items' with the instruction: 'Make text and other items on the desktop smaller and larger. To temporarily enlarge just part of the screen, use the [Magnifier](#) tool.' Below this are three radio button options: 'Smaller - 100% (default)', 'Medium - 125%', and 'Larger - 150%'. A red arrow points to the 'Smaller - 100% (default)' option. To the right is a preview image of a desktop with a grid and a window. Below the radio buttons is a section for 'Custom sizing options' with a checked checkbox 'Let me choose one scaling level for all my displays'. Underneath is a section for 'Change only the text size' with the instruction: 'Instead of changing the size of everything on the desktop, change only the text size for a specific item.' This section includes a 'Title bars' dropdown menu, a font size dropdown set to '11', and a 'Bold' checkbox. At the bottom right is an 'Apply' button. A warning icon and text at the bottom state: 'If you use one scaling level, some items might be different sizes on different displays.'

Control Panel Home

Adjust resolution

Calibrate color

Change display settings

Adjust ClearType text

Change the size of all items

Make text and other items on the desktop smaller and larger. To temporarily enlarge just part of the screen, use the [Magnifier](#) tool.

Smaller - 100% (default)

Medium - 125%

Larger - 150%

[Custom sizing options](#)

Let me choose one scaling level for all my displays

Change only the text size

Instead of changing the size of everything on the desktop, change only the text size for a specific item.

Title bars | 11 | Bold

[Apply](#)

Warning: If you use one scaling level, some items might be different sizes on different displays.

See also

Personalization

Devices and Printers