

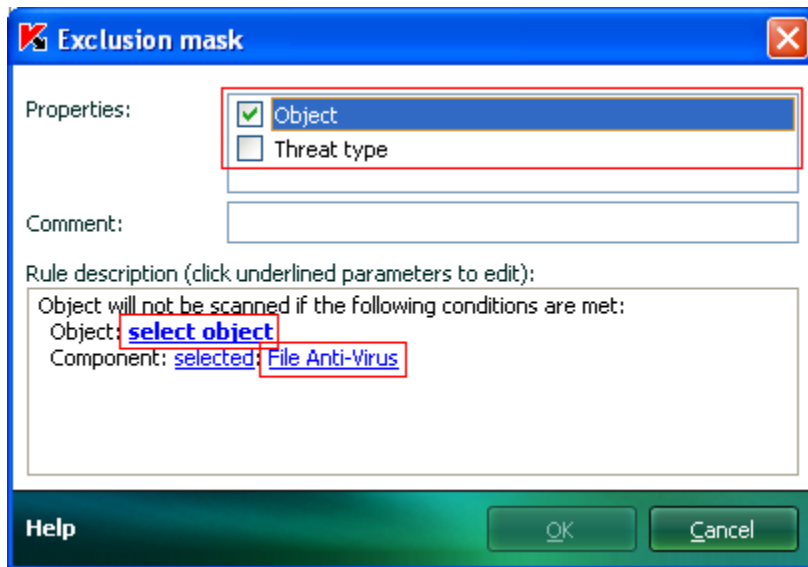
Kaspersky Exclusion Rules

From Menu select “Settings”, then select top left Folder looking Icon. Naturally, course check Internet if you can’t find where to do it.

How to create an exclusion rule

To create an exclusion rule:

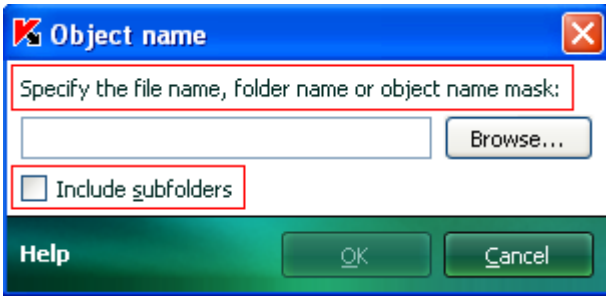
1. Open the application settings window.
2. Select **Protection** on the left.
3. Click the **Trusted Zone** button in the **Exclusions** section.
4. Go to the **Exclusion rules** tab and click **Add**.



5. Select an exclusion type in the **Properties** field: **Object** and/or **Threat type**.

- **Object**

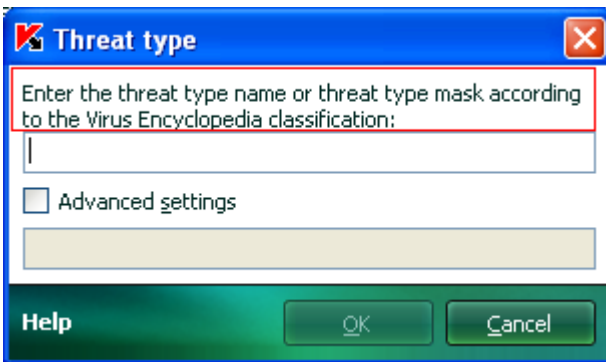
Click **select object** and choose a file, a folder or a mask to exclude.



Select a **Component** in the corresponding field. The rule will apply to the selected component.

- **Threat type**

Click **Enter threat type** to select a file, a folder or a mask to exclude.

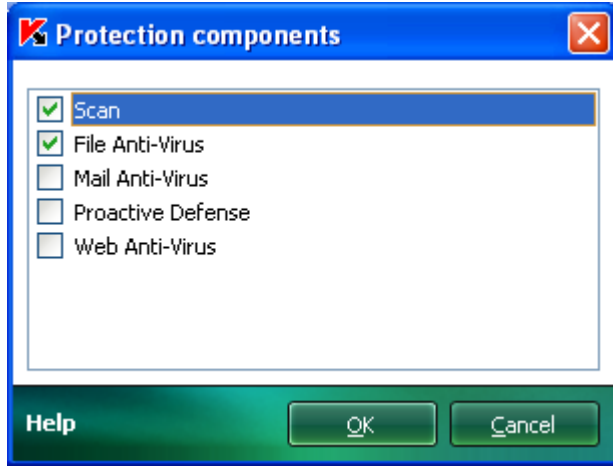



Select a **Component** in the corresponding field. The rule will apply to the selected component.

Rules can be applied to the following [protection components](#):

- Scan,
- File Anti-Virus,
- Mail Anti-Virus (*Kaspersky Anti-Virus 6.0 for Windows Workstations 6.0.4.x only*),
- Proactive Defense (*Kaspersky Anti-Virus 6.0 for Windows Workstations 6.0.4.x only*),

- Web Anti-Virus (*Kaspersky Anti-Virus 6.0 for Windows Workstations 6.0.4.x only*).



 An excluded object will not be scanned, when the folder/disk containing this objects is scanned. Yet you can force scanning of the excluded objects in the context menu (by right-clicking the object).

To create an exclusion rule in the report window:

- Right-click the report object you want excluded.
- Choose the **Add to Trusted Zone** option.

An **Exclusion rule** window will open. Make sure that you are satisfied with the new exclusion rule settings. The **Object name** and **Threat type** fields are assigned automatically on the basis of the report data. Click **OK** to create the rule.