

March 2014 - Newsflash



Do you any Submit Paper Claims?

Paper Insurance Claims: On **April 1, 2014**, **Medicare** will accept paper claims **only** on the revised CMS 1500 claim form (02-12). Check the lower-right-hand side of the claim form for this label.

Starting April 1, 2014, **Medicare will no longer accept** claims on the old CMS 1500 claim form (08-05). To get started:

- You must have the newer, blank forms
- You must have the latest PowerSoftMD updates installed
- You should sign up for our Free Webinar on March 19th in addition to ICD-10 information we will be covering how to align and print on these newer claim forms!
- Read the Medicare Notice by clicking the **Red** Link at the top of our website: www.powersoftmd.com then click on **Medicare April 1 2014 Info Link**



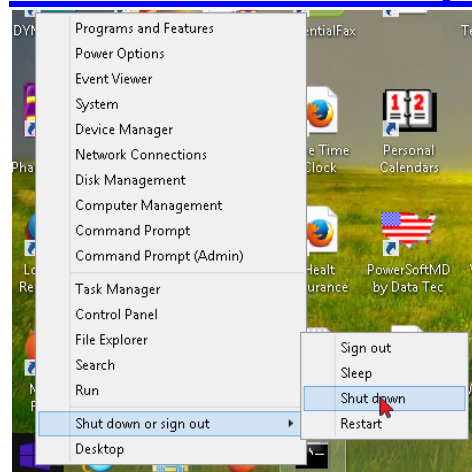
Reminder: Free Webinar!

We will conduct a free Webinar on **March 19th** covering new features for ICD-10 usage.

Go to www.powersoftmd.com and click on the link:

"ICD-10 Free Webinar"

Windows 8.1 – Tips & Tricks



← 1) Right click on the new Windows Start Icon on the lower left of the Task bar, you will see a list of optioning including Shutdown.

2) Pressing the Windows “Key” + “S” opens a search; you can type in the name of the program you’re looking for. Example: type in “calculator” to bring it up